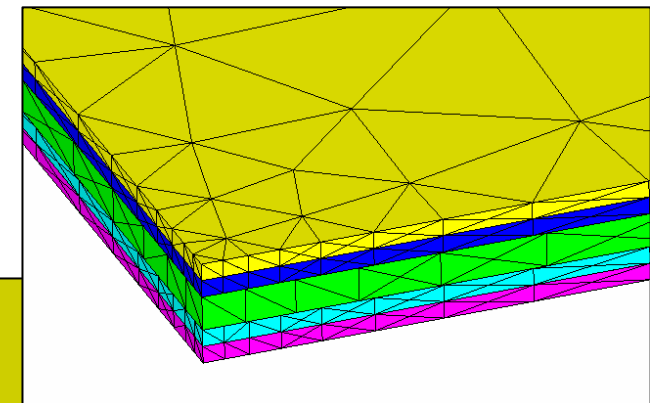
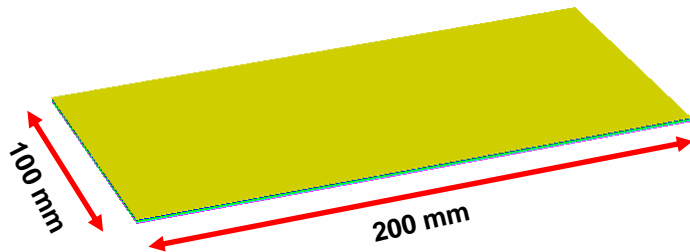
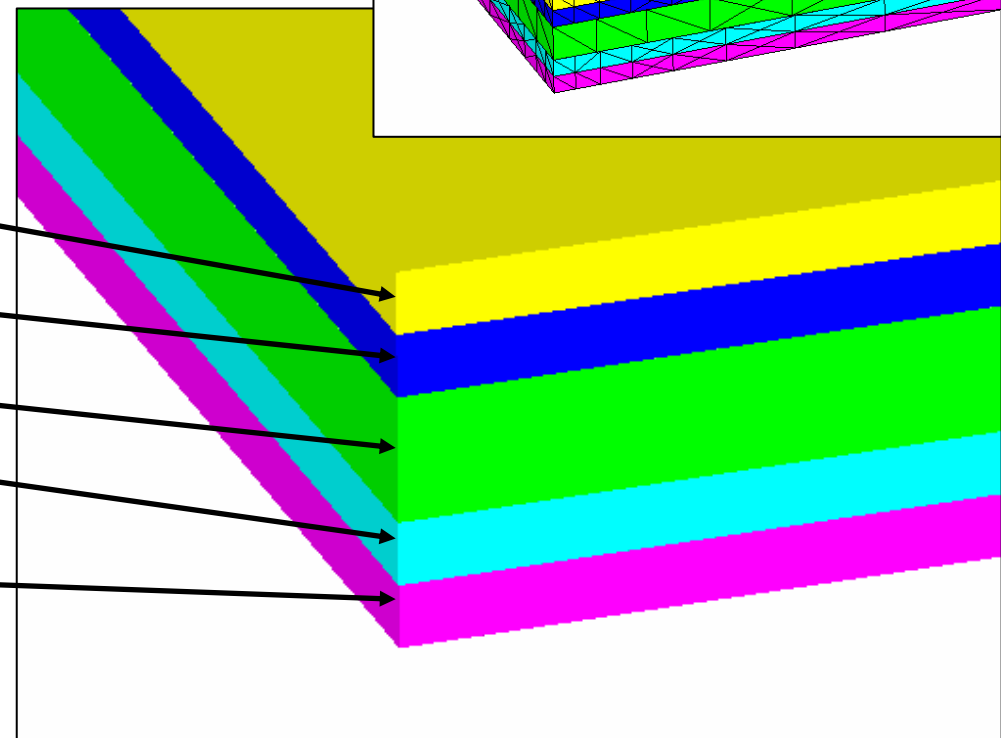


## Model Description

### Fuel cell model STL format input



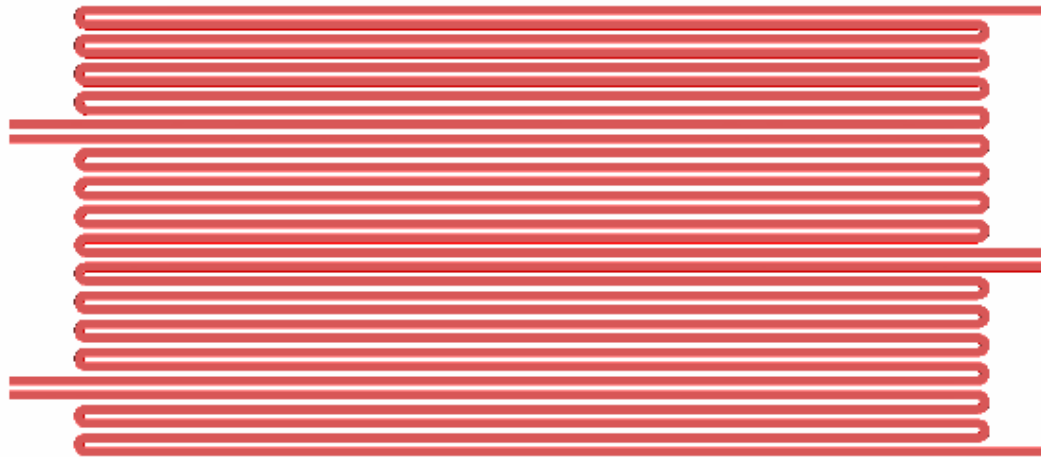
- Anode gas diffusion layer thickness = 0.3 mm
- Anode catalyst layer thickness = 0.3 mm
- Electrolyte membrane thickness = 0.6 mm
- Cathode catalyst layer thickness = 0.3 mm
- Cathode gas diffusion layer thickness = 0.3 mm



## Model Description

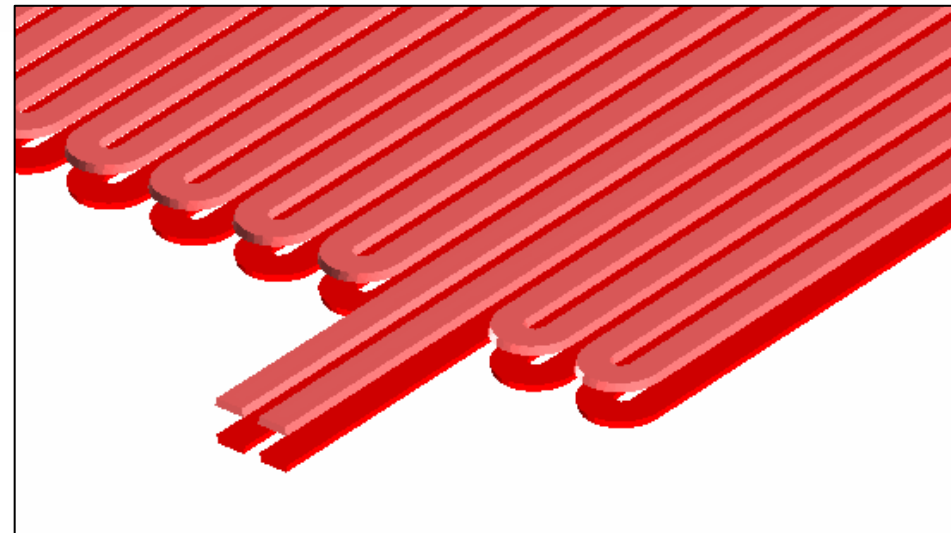
---

### Fuel cell model STL format input

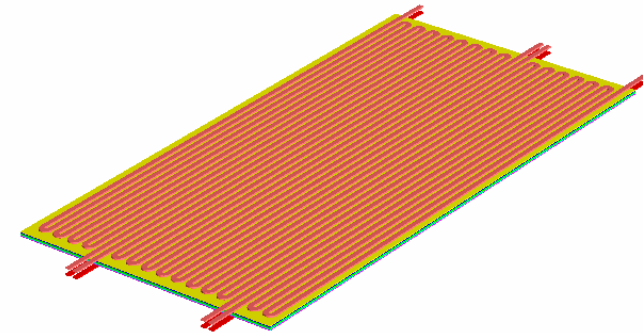
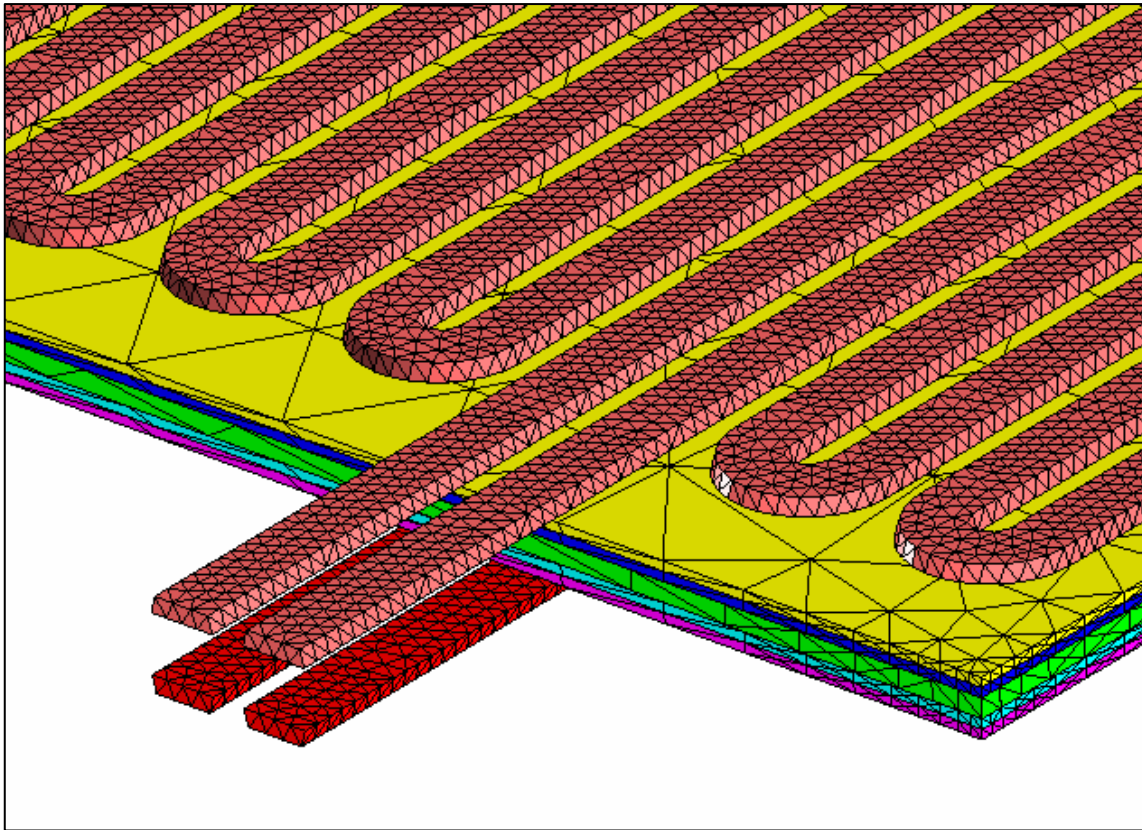


**Gas Cannel input**

**32 Channels**

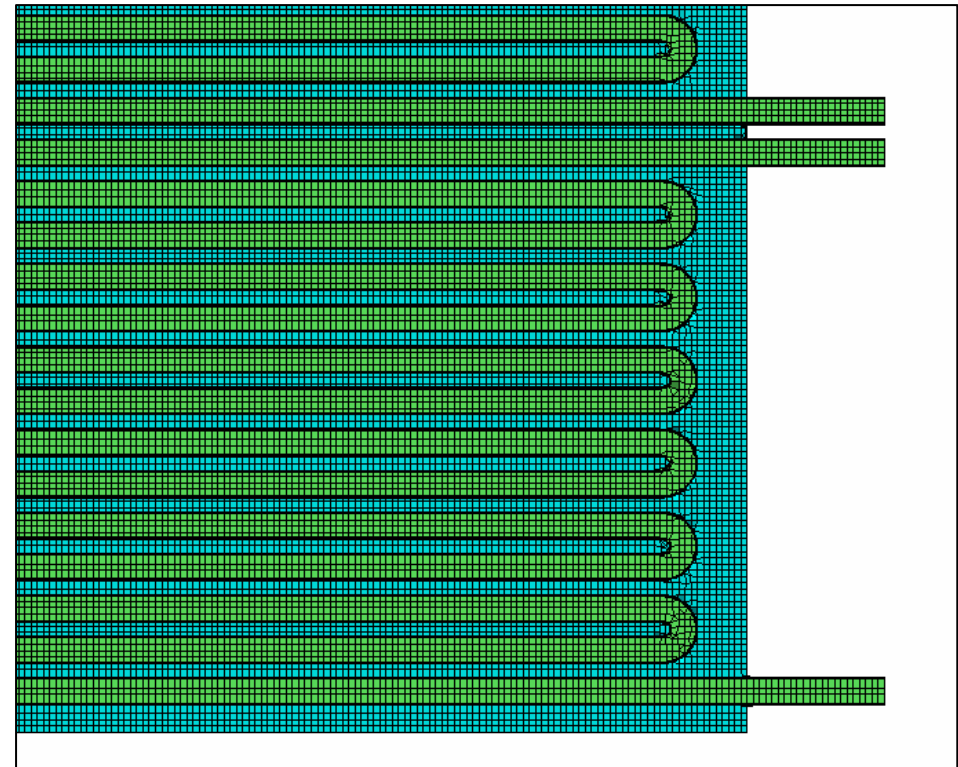
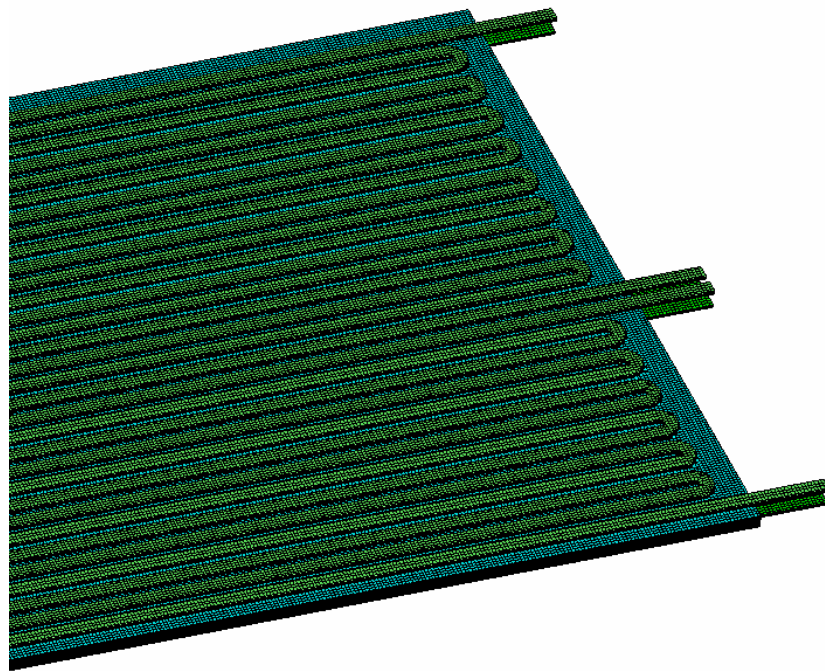


## Fuel Cell Geometry Data Input



Each node point of input surface data never coincide !!

# Mesh Generation



# Mesh Generation

---

